

## PARKING BRAKE VALVE - MAINTENANCE PRACTICES

### 1. General

- A. This section contains information on parking brake valve removal and installation. A faulty parking brake valve is not repairable, and must be replaced as an assembly.

### 2. Parking Brake Valve Removal/Installation

- A. Remove Parking Brake Valve (Refer to Figure 201).

**NOTE:** The parking brake valve is located on the aft side of the firewall (FS 100.00) between and just below the pilot's rudder pedals.

- (1) With parking brake handle (9) in off position, drain hydraulic fluid from brake system.
- (2) Remove scuff plate and floorboard section forward of pilot's rudder pedals.
- (3) Disconnect master cylinder hoses (12) and (13) from parking brake valve (11). Cap ports and hoses.
- (4) Disconnect brake lines (1) and (2) from parking brake valve (11). Cap lines and ports.
- (5) Loosen clamp bolt (3) on control lever (4) and remove control wire (5).
- (6) Remove two bolts (15) attaching valve (11) to firewall.
- (7) Remove valve (11) from airplane.
- (8) For Airplanes 20800547 and On and Airplanes 208B5000 and On, do the following:
  - (a) Remove the two valve inlet fittings (17).

- B. Install Parking Brake Valve (Refer to Figure 201).

**CAUTION:** Do not use Teflon tape in the installation of the two valve inlet fittings.

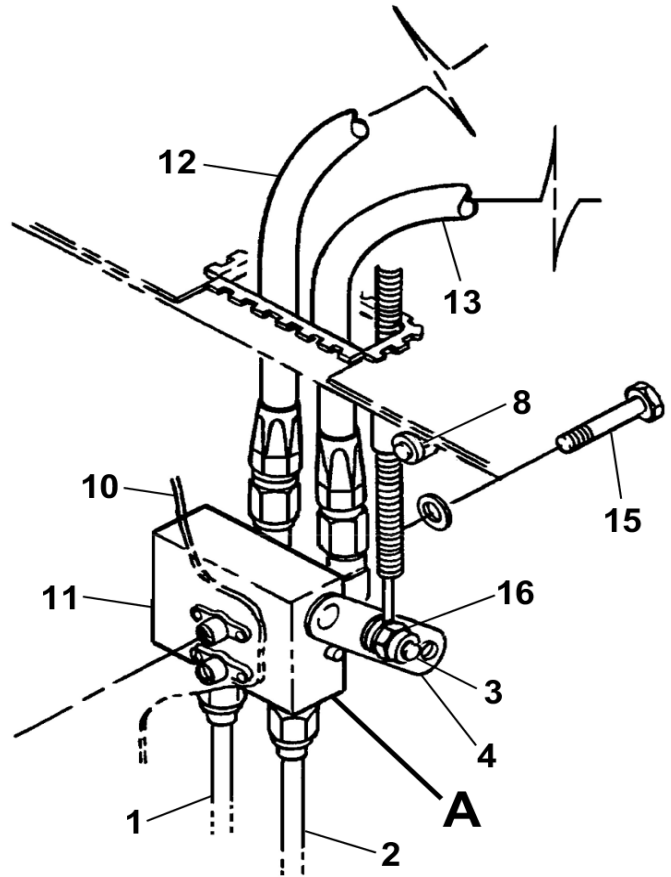
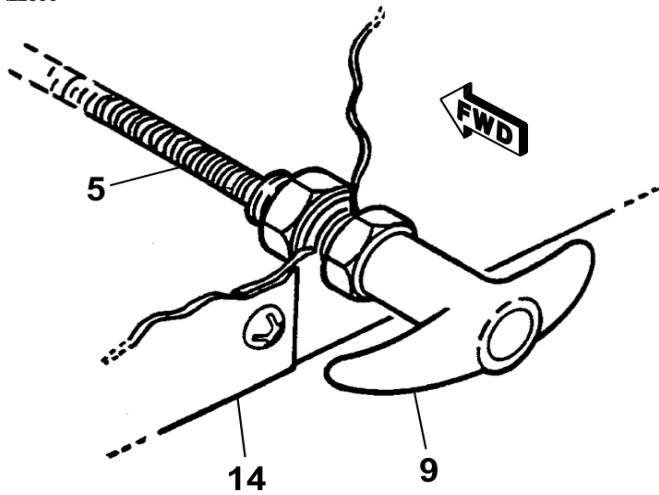
- (1) For Airplanes 20800547 and On and Airplanes 208B5000 and On, do the following:
  - (a) Install the two valve inlet fittings (17) in the valve (11).
  - (b) Torque the two valve inlet fittings (17) to between 50 inch-pounds (5.65 N-m) and 65 inch-pounds (7.34 N-m).
- (2) Position valve (11) on aft side of firewall (10), aligning holes in valve with holes in firewall (10); install bolts and washers.
- (3) Remove caps from hoses (12) and (13) and lines (1) and (2) and connect to appropriate port of valve (11).
- (4) Install clamp bolt (3), washer, and nut on control lever (4) so bolt will swivel in control lever.
- (5) If knob (9) and control cable (5) were removed, install wire (5) and nut on forward side instrument panel, and lock nut and knob (9) on aft side of panel.
- (6) Insert control wire (5) through clamp bolt (3) on control lever (4) and torque clamp bolt nut (16) to 15 inch pounds.
- (7) Bend control wire to 90 degrees to prevent disconnection in the event nut (16) should become loose.
- (8) Bleed brake system. Refer to Wheels and Brakes - Maintenance Practices.
- (9) Rig control knob (9) so that there is a 0.12-inch (minimum) cushion between locknut and knob (9) when control lever (4) is in OFF position.
- (10) Install floorboard section and scuff plate removed for access.

### 3. Parking Brake Valve Return to Service Procedure

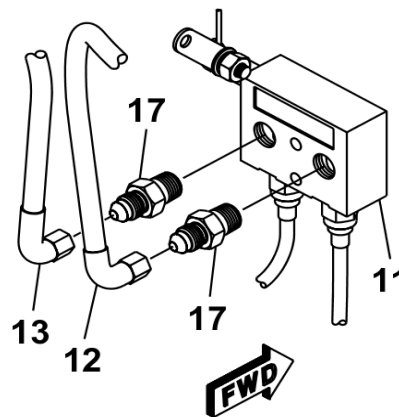
- A. Do the Brakes Operational Check. Refer to Wheels and Brakes - Inspection/Check.

Figure 201 : Sheet 1 : Parking Brake Valve Installation

A22390



1. LINE TO RIGHT WHEEL BRAKE
2. LINE TO LEFT WHEEL BRAKE
3. CLAMP BOLT
4. CONTROL LEVER
5. CONTROL ASSEMBLY
6. CLAMP
7. CABLE SUPPORT
8. CLAMP
9. HANDLE
10. FIREWALL
11. PARKING BRAKE VALVE
12. HOSE TO RIGHT MASTER CYLINDER
13. HOSE TO LEFT MASTER CYLINDER
14. INSTRUMENT PANEL
15. ATTACH BOLT
16. CLAMP BOLT NUT
17. VALVE INLET FITTING



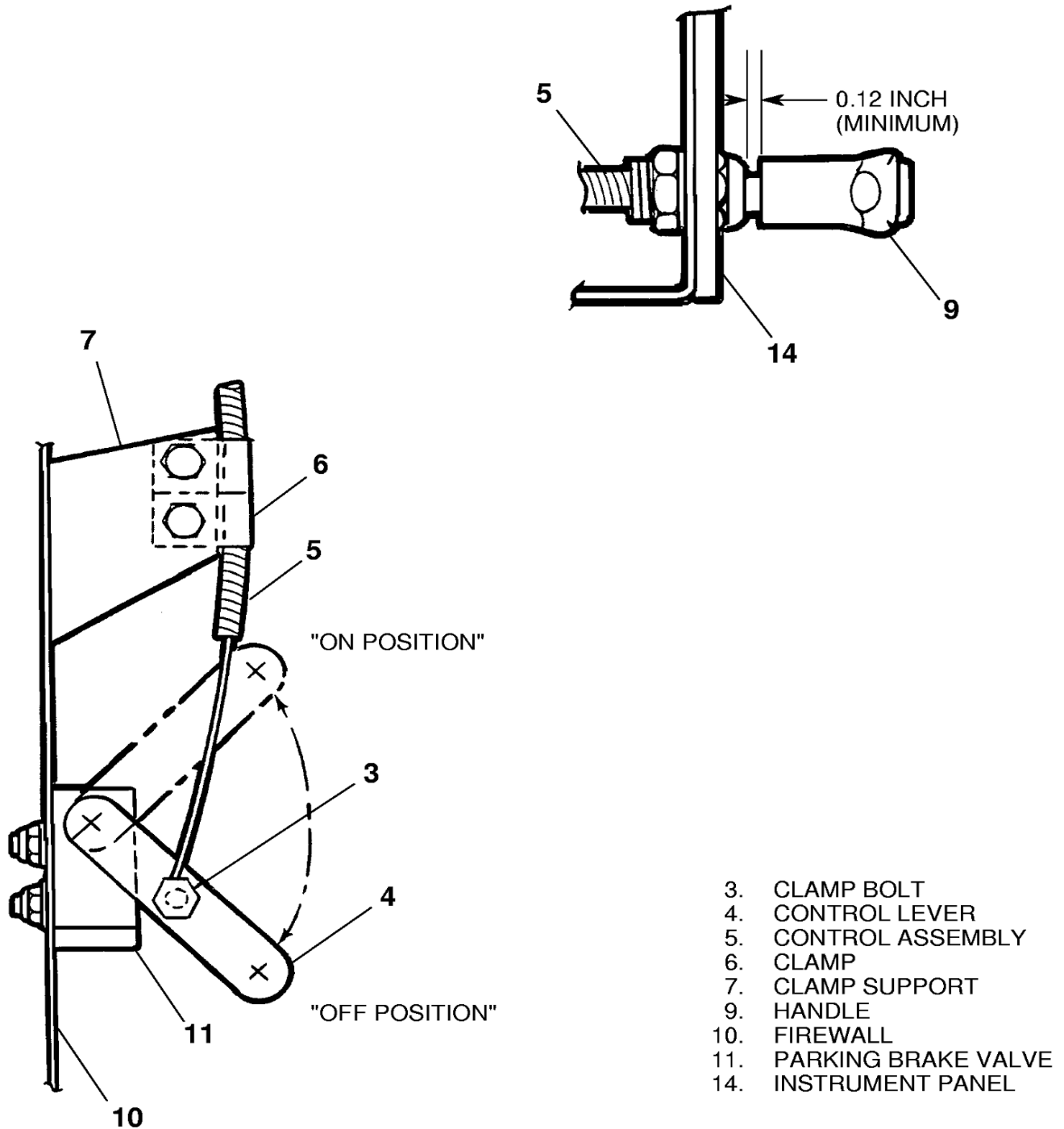
**DETAIL A**

AIRPLANES -0547 AND ON AND  
 AIRPLANES B5000 AND ON

2641R1002  
 2641R1003  
 A2615T1051

Figure 201 : Sheet 2 : Parking Brake Valve Installation

A22391



26411002  
 2641X1010